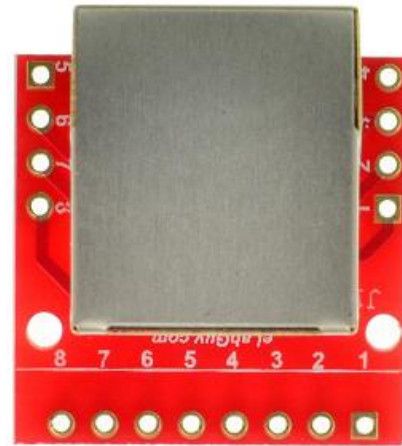


# RJ45-BO-V1A



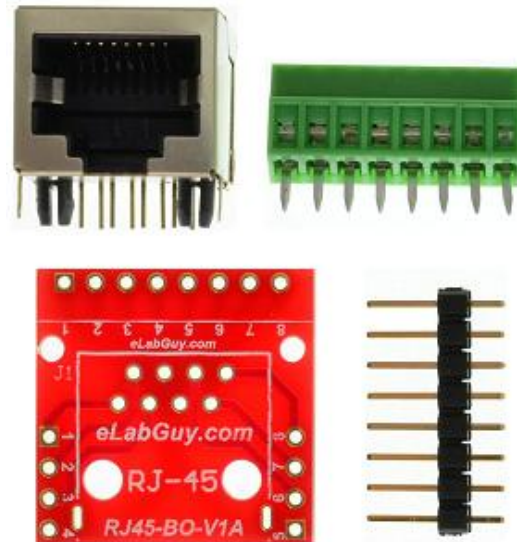
## 1. Description:

RJ45-BO-V1A is a simple RJ45 8P8C socket breakout board. It brings all 8 pins of a RJ45 socket to screw terminal blocks or headers for easy testing, prototyping and breadboard connection. For breadboard connections, user can use the 8pin header on the bottom for a sideways connection. User can also use the two 4pin headers on both sides of the breakout board to connect to the front end of the breadboard for a steady connection.



## 2. Features:

- All 8 pins of a RJ45 8P8C socket brought out to headers or screw terminal blocks
- Various connecting method chosen by users.
- 2 mounting holes with 2mm diameter hole size
- 0.9"(22.86mm) X 0.9"( 22.86mm) board dimensions



## 3. Parts:

- 1pc X RJ45-BO-V1A PCB
- 1pc X RJ45 socket
- 1pc X 8pin 0.1"(2.54mm) spacing terminal block
- 1pc X 8pin 0.1"(2.54mm) header

Figure 1: Parts inside the kit  
(Note: the module is not assembled, user can decide which connector to use on the module.)

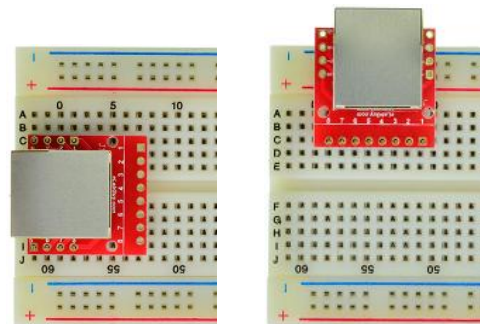


Figure 2: Examples of various methods for connecting the RJ45-BO-V1A to a breadboard



Figure 3: RJ45-BO-V1A Bottom view

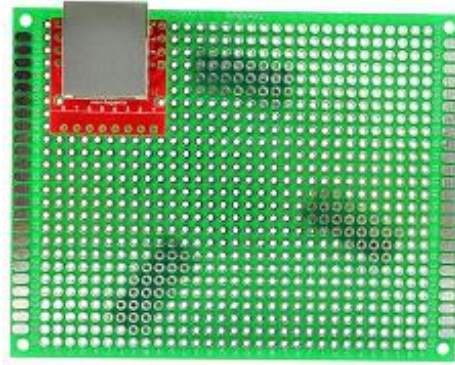


Figure 4: Solid Mounting on prototype PCB